

Annual Service Requirement:

To maintain optimum efficiency, annual cleaning is recommended.

1. Isolate the heating system and close both the two isolating valves. Prepare a suitable bucket to collect spillage.
2. Unscrew the knurled moulding and withdraw the magnetic bar.

CAUTION:

The magnetic bar is a very powerful 9000 gauss magnet. Keep away from personnel with heart pacemakers, any sensitive electronic devices storage media or magnetic bank cards.

3. Drain the filter chamber into the bucket using the drain-off valve €
4. Use the castellated spanner (12) supplied (or a strap wrench) to loosen the body (4) of the filter chamber. Unscrew the filter body fully, clean the body (4), the stainless steel filter (5) and the magnet cover (7) using hot, soapy water, and rinse with fresh water.
5. Re-assemble the magnet bar (1) to the body section (4), taking care to fit the stainless steel filter (5) centrally inside body (4) and O-ring (6) onto the stainless steel filter side (5) . Fully hand-tighten the magnetic bar (1) to filter body (4). Ensure drain-off valve is closed.
6. Partly open the inlet valve (according to the flow direction arrow on diverter (11) and the brass air vent bleed screw, until all air is removed. Close bleed screw, then fully open inlet and outlet valves and check for leaks.
7. Start the heating system

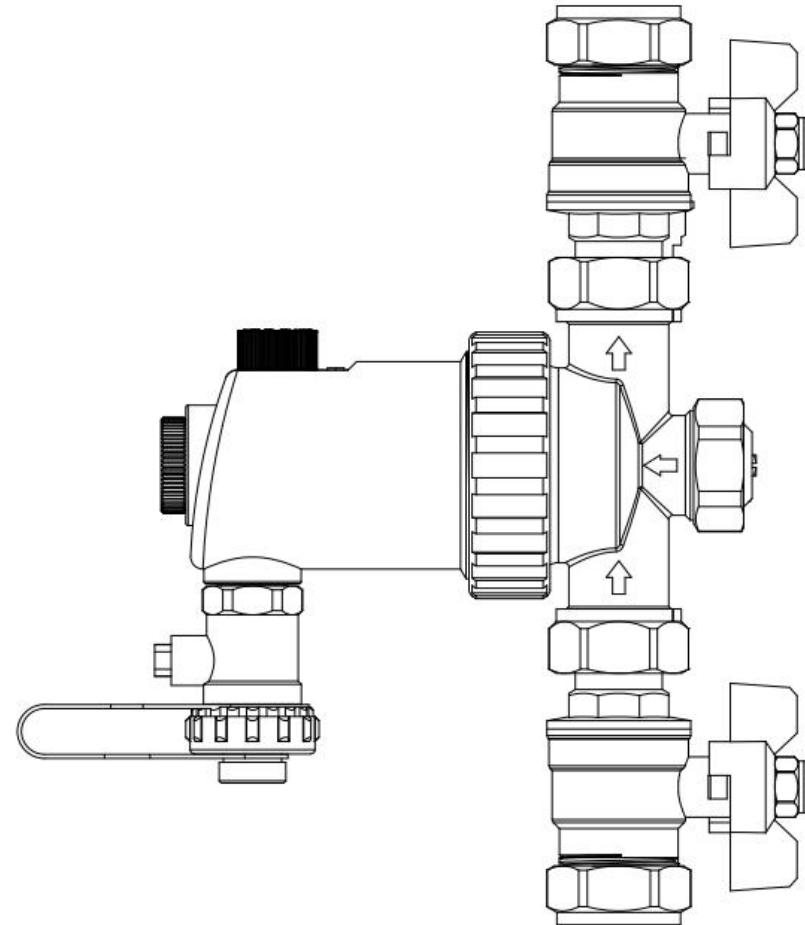
WARNING: Please observe the safety instructions provided in this document. This filter contains a strong magnet. Care and attention should be taken at all times during installation and servicing. DO not place the magnetic core on any ferrous surfaces or near ferrous items.

Chemical Dosing:

1. Isolate the boiler and close both isolating valves. Release air pressure by opening the right AirBleed Valve. Prepare a suitable bucket to collect spillage.
2. Drain the filter fully via drain-off valve €
3. Unscrew and remove filter body (4) as per point 4 above (Annual service requirement). Fill body (4) with water treatment chemical (capacity 30ml). Re-assemble the magnet bar (1) to the body section (4) as per point 5 above.
4. Re-connect the filter to the heating system as per point 6 above.
5. Run the system for approximately 5 minutes to disperse chemical additive into system. Repeat

ATTENTION: Do not allow chemicals to remain static in the filter for long periods.

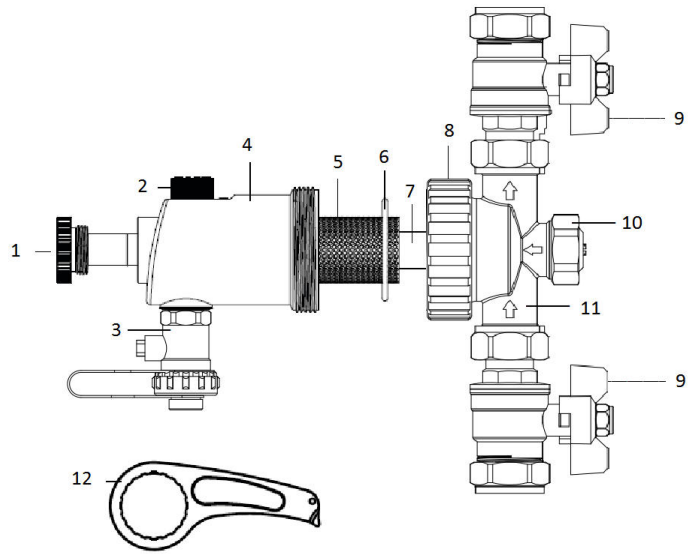
Magnetic Filter for Central Heating Systems - 22mm Isolation valves



Installation and Operation Manual

Please retain for future reference.

Component Parts:



1	Magnetic bar	7	Magnet cover
2	Cover	8	Filter body
3	Drain-off valve	9	Ball valve
4	Filter body	10	Air bleed valve
5	Stainless steel filter	11	Diverter
6	O-Ring	12	Spanner

Trouble Shooting and Problem Solving:

Problem 1: Water is leaking from the filter

Solution 1: Turn off the system, close the isolating valves. Perform the following checks:

- i. Check all seals for location and condition
- ii. Check the isolating valve nuts to ensure they are fully tightened
- iii. Check the locking collar is firmly tightened and not cross threaded

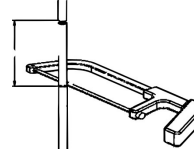
Problem 2: Poor flow through filter

Solution 2: Thoroughly clean the filter when reduced flow is noted

Installation Instructions:

Only a competent person such as a qualified heating engineer should install the device.

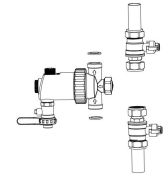
1. Locate a suitable site for the filter to allow access and servicing. Return pipe is recommended, do not fit it between the boiler and the overflow on open vented systems.
2. Release and drain the heating system pressure
3. Mark the pipe, using a suitable tool to cut **180mm** out of the marked section and remove burrs.



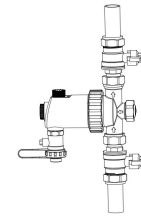
4. Fit the isolating valves provided onto both inlet and outlet pipes



5. Introduce the diverter, **ensuring the arrow direction follows the heating system flow**. Fit the diverter using the flat washers provided and tighten the inner nuts fully. After that, tighten the outer compression nuts on valves to ensure a watertight seal.



6. Fit the filter body to the diverter and hand tighten the locking collar (do not over tighten)



7. Open the isolation valves and turn on heating system

8. Vent as required by using the Top Air Bleed valve.

